

Mamaara

(Miyengaa Jomɔ Pu)

Taanni Taanni Seme

(Mijankakan kalanni seben fɔɔ)

Syllabaire complet en mamara (minyanka)

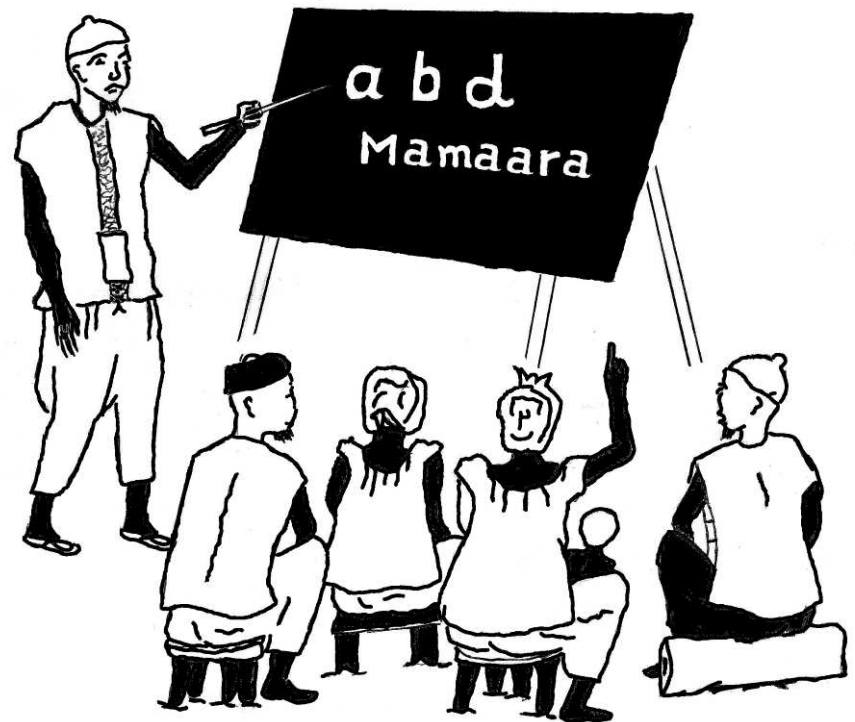
Date de publication:

Decembre 2015

Quatrième Édition

Association pour la promotion de la langue MAMARA
BP 19 KOUTIALA, République du MALI

Impression en ligne



We sɛmɛ we wo kalaa wu pyegana ⁴⁵

We Mamaara (Miyengaa jomɔ pu) taanni taanni sɛmɛ we ya yàa, kɔnhɔ wu kalaa wu da gaan kalaagbaya ni. (Ga lee bɛ na, wa na já da we sɛmɛ we taanni wu yɛ, kalaato baa.) Sɛmɛ wu kalaatɔɔyɔ yi bɛeri y'a yàa yaaganunɔ na, lee kɔri jɛ na nimɔri pyaa kiimu ki jɛ kalaa wu tayereye yi ge, kee bɛeri wo kalaa wu naha tatagana ki jɛ nigin. Lee ya pye kaɲuɲɔ na sɛmɛ wu kalaatɔɔyɔ yi bɛeri pye yi na gaan kangana nigin na. Kalaatɔɔgɔ nigin bɛeri, ye tayereye ye yi wa ki na.

1. Kafila kaɲa ki jaa wu ma yàa, na kafila kaɲa ki bɛ ka. Kamapile lemu na kalaa wu jɛ ge, na lee wo jɔɲii ki tirege kafila kaɲa ki nɔhɔ ni.
2. Kamapile lemu l'a kalaa nimɔrishiiɛ (N° 1) wu ni ge, na jɔɲii kii ka ni lee ni, kelee kafila kaya yemu yi jɛ jɔɲii nigin nigin ge, na yee ka ni lee kamapile li ni.
3. Kamapile lemu na kalaa wu jɛ ge, lee ma daga jɔɲii kii ka na tirege, kelee kafila kaya ya. Na ye taannaa wii ni yiye ni.
4. Kamapyaa kiimu wo kalaa w'a toro ge, na kee taga jɔɲii kii ka, na ba kamapile nivonɔ li taga jɔɲii kii ka kee nɔhɔdaan.
5. Kamapile nivonɔ li ma daga kafila kaya ya ka.
6. Miyengaa jomɔ pu kafila kaɲa ka, kelee kafila kaya ya wo kalaa. Yee yemu y'a jomɔ pu sogoo puyɛ na, na pu kóri fiinɲɛ, yi kamapyaa kii sanha galaa ki ye ki ye wɛ ge.
- 6* Mujonɲɔ kii wo kalaa, kelee kamapyaa kii jɛrigaɲaa.
7. Maani wa wemu na já kalaatiime wu pyegana faha ge.
8. Kamapyaa kagaɲaa daanni.

Mamaara

(Miyengaa Jomɔ Pu)

Taanni Taanni Sɛmɛ

(Mijankakan kalanni seben fɔlɔ)

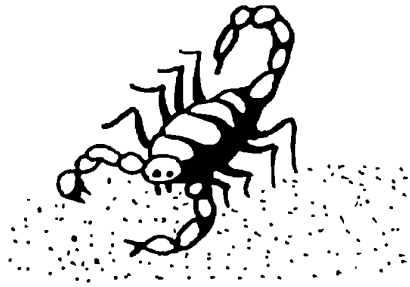
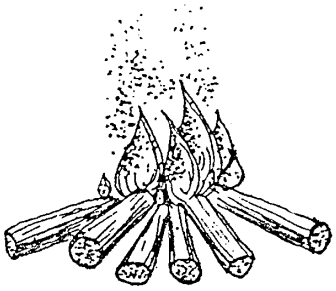
© TOUS DROITS RESERVES

Association pour la promotion de la langue MAMARA
B.P. 19, KOUTIALA, Rép. du MALI

Décembre 2015

a a A

1



na
a

nà
à

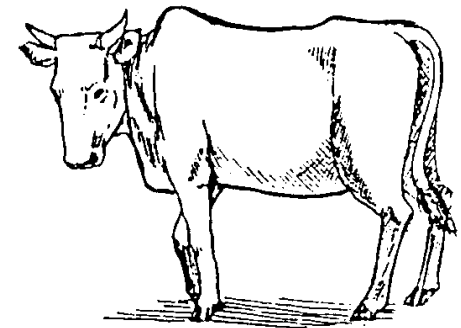
na	nà	na
nà	nà	na

Nà w'a foro na ki ni.
 Nà w'a foro
 Nà

Nà w'a foro na ki ni.
 na ki ni.
 na

aa

na nà nà na na na na

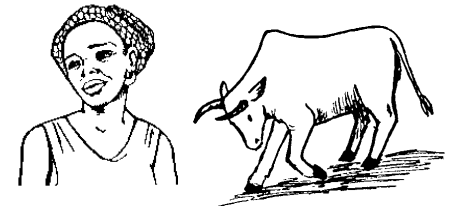


Isa wo nu
nu

nù

nu	nù	nù
nù	nu	nu

nu nù
na nà



Nù w'a Isa wo nu su.
Isa wo nu
nu

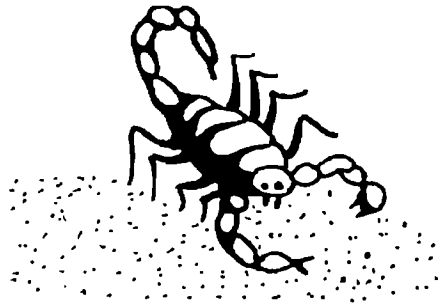
A

nu nù nù nu nu nu nu

n N

2

1.



nà

2. | a
 nà | na

3. nà
 na

5. na
 Nana

6. Nana **w'a** **nà ja**.
 w'a **nà ja**.
 nà

<u>M.K.</u>	<u>Shɔnhɔɔ</u>	<u>M.K.</u>	<u>Shɔnhɔɔ</u>	42
sorogo	kunaya, farinya	to	faa, bin, meleke	
sòrogo	jeni	tɔ	tɔn, tugu	
shoo	daga	tuguro	doni	
shòo	sajɔ	tùguro	fɔɔɔ	
shɔ	muso, bɔsi, kisi, san	cee	muso (kelen), da, dabɔ	
shɔhɔ	tobi	cèe	musow (caman)	
shòhɔ	sɔɔ	cere	tige	
sinme	dɔɔ	cére	fari	
sìnme	tulu	cɛɛ	fan, filen	
taan	diya, ja	cére	dɔɔ	
tàan	kɔɔ	ciri	tɔɔ	
tanha	kumu	círi	labɔ, kunben	
tánha	tanga, kolɔsi	cìri	tiso	
tànha	dasi	wa	dɔ, bɛ	
taha	da, segi, tobi, balabala	wà	yen	
taɲi	fasan	wá	fili	
tàɲi	kanmi	wu, w'a, wee	nin, a, ale	
te	dute, cɛ	wù, w'à, wèe	an, anw	
té	caya, caman, danteme	ya	wa: pininkali, sebentiyalan	
tè	ka fili fɛn wala mɔɔ ma	yá	man kene, dimi	
tɛɛɛ	surun	yaa	bɛ na	
tèrɛɛ	segin, kɔsegin	yàa	dilan, da	
tire	wuruba, sin	yiri	wele	
tìre	mun	yíri	fɛ	
		yìri	wuli	

Mijankakan dajɛ minnu bɛ kan ta, 41
olu fanba sebennen bɛ yan.

(2)

<u>M.K.</u>	<u>Shɔnhɔɔ</u>	<u>M.K.</u>	<u>Shɔnhɔɔ</u>
da	sɔɔ, na, dan	gba	min, ga, ba
dà	da	kaa	ko, wale
ja	denke, ci	káa	yira
já	se	kàa	kali
je	ko	kɔri	gen
jé	don	kòri	kɔɔ
jɔ	kunu	na	tasuma, ko, kan
jò	jɔ	ná	ce (kelen)
faɲa	kaburu	nà	bunteni
fàɲa	fini	namaa	cɛw (caman)
fo	yelemali, fo	nàmaa	bunteniw (caman)
fò	foli	ni	kɔɔ, ni, ye
foo	tigi	nɔ	se, cin
fòo	juru	nu	ba
foro	bɔ	nù	misi
fòro	bɔ (a waati yere la)	ɲa	ye, jo
fɔ	fɔ	ɲá	nɔɔni
fɔ́	jeni, woyo	ɲà	bin
fɔ̀	fye	ɲi	fa
fuu	perɛn, ku (kelen)	ɲí	mana
fúu	jeni (a waati yere la)	ɲii	ɲɛden (kelen)
fùu	fye (a waati yere la)	ɲìi	ɲɛdenw (caman)
	kuw (caman)		
fya	jɛɛɛ, siran, jila	mii	juru, kasi



Musa ni wu shɔ Nana.

6*. Nà w'á foro.
Nu w'à foro.
Musa w'a foro.

7. Nana w'a nù ɲa.
Musa w'a nà ɲa.

8.

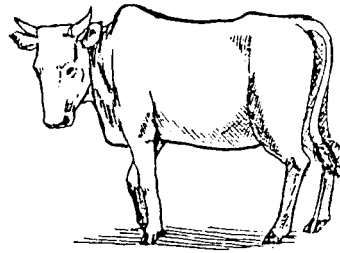
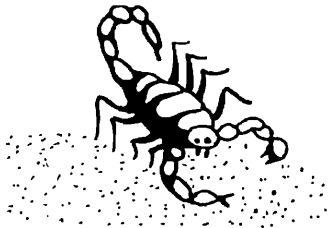
nnn

n

N

11

1.



nà
à

nù
ù

2.

ù	à
nù	nà

3.

nù	nà
nu	na

5.

na
Nana

6.

Musa w'a nà wu ja.
w'a nà wu ja.
nà

Ta Nana nu w'a Musa ja? Mm.

Ta w'a wu ja? Mm.

toro wε, a wu she sige yanmuyɔ yiri pinne, na yi pye: «Nε wu jε yee fanhafɔɔ nimε. Lee bu bye lee ya taan wemu ni wε, wufɔɔ wu foro wù zhaanra le.» A Suu ni Cenri di jo: «Lee wa da da nɔ wèe na-ε sa, Xɔbe ni Kaafa na zii mu jii wolo wèe ni.» Ba Xɔbe ya foro wε, a Jason di wu co wu juwyenε na, na wu wá. A wu she do na wu serεε kegi.

A Kaafa, ni Cenri, ni Suu ni, a yi bæeri di sii fya. Jason ya ta da lee na wε, a wu gari Kunɔɔ be feni, na she jo: «Kunɔɔ, muye w'a kori. Wù wùyε taanna wii, bani fanha n'a zhaa.» Ba p'a zhaanra ti le wε, a Kunɔɔ di keɛ taha were ti xuu wu na, na ti kile wolo. A ki xhɔ na Jason fige lɔ wu kanige keɛ ke na, na wu seri. A Jason di figifigi fugba wu ni, na ba do caa lɔhɔ ni. Lee ya pye ge, a wu jo: «Fεrεme wa naha dε. N'a da voro da se xuu wa shishiin ni nige wε.»

Lee l'a Jason pye lɔhɔ yaaga.

Talεε: Zhiga na wɔɔɔ na ki nagoo se
jahajaha.

8.

zhiga

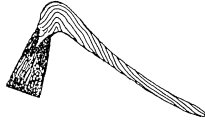
kuzhɔ

Wù kuri kadugo

33-40



lozo



kpaan



zhiga



zanha

6. she | co | se | kpɔɔn
zhe | jo | ze | gbuun

foro | to | pe | koo
voro | do | beni | goo

7. Kunṅɔ ni Jason

Caṅa ka, Jason ya nɔ Kunṅɔ na na jo:
«Zhaanra were tayaaga ni ne pa, p'a jo na ti
nidaanra wa mu mu.» A Kunṅɔ di wu nɔ shɔ na:

Kapɔii de! Ne wo were ti ya gaan sipii beeri mu
we. Bani ma bu shii, n'a da ja na wuuro ti shɔ
ma na nige we. Ba w'a yee jo we, a Jason di jo:
«N'a da zhii we.»

A Kunṅɔ di were ti yaa, na xuu wa kɔn Jason
tikunṅɔ ni, na were ti le wa. Jason fungaa da
pele, wu nɔsanga be da pe. Ba yeye taanri ya

6*. Musa w'a na wu ja
w'a wu ja.
Musa w'a nu wu ja.

7. Ta na w'a foro na ki ni?
Mm, w'a foro.

Ta Nana nu w'a wu ja?
Mm, w'a wu ja.

8.

aa

u

A

U

a

u

22

1.



funana
fu

2. u | a
fu | fa

3. fu
fa

4. nu na
fu fa

5. fu
funa
funana

7. **Dire ni Kunᅇ**

Dire l'a jo na Kunᅇ k'a kila, na ki ma buri yaha, na kiyε kurulo. Ki ba ᅇari k'a ki yatεnye kile kile yeege, na direge ᅇiᅇ ke na na gaᅇi.

A Kunᅇ di jo na kee zᅇ w'a gbile na lee na kee ma wu tirege. Na kee ma sira dugi logo ni, na ki ᅇahara, na kiyε yaha na pa jaa, na yiri na logoo ki bulo bulo li.

A ki jo sanha na: «Yawyere mu ᅇε, wa ya mu shi cε wε, Dire. Mu ya ᅇaa wε fo ma Vulavula na mari, na mayε sani gburaya na.»

A Dire di jo na kafila popaya Kunᅇ ya jo, na suri ki ni, a Kunᅇ di li puro shan, na buri li ᅇuᅇ ni, a li mᅇri foro ki tᅇyᅇ ye te ni. A ki gile li feni, ki ya li ta wε.

Talene: Kile ᅇε fugba ni, tobinᅇε pya da ᅇawaara kun wε.

8.

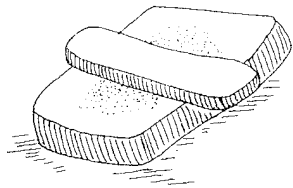
tira

buloo

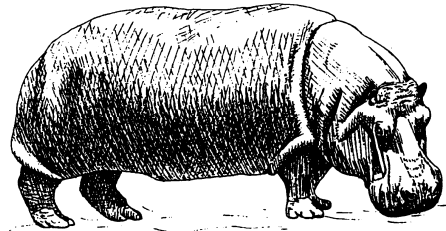
tir bul fil dir

40

1.



tira
tir



kidiriŋɛ
diri
dir

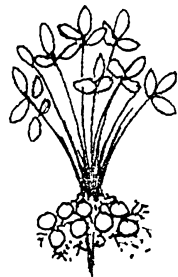


Musa wo funana li ɲɛ Isa.
funana li ɲɛ Isa.
Isa.

(4)

2.	a	i	a	ɛ	oo
	tira	diri	fila	Kile	buloo

3. tira
diri
fila
Kile
buloo



buloo
bul

4.	tige	figi	buguro	kulo
	tira	kafila	buloo	Kile

5. gbura gbile sirani pile

6. Nù w'a funana li su.
W'a funana li su.
W'a li su.

Funana l'a nù wu ɲa.
l'a nù wu ɲa.
l'a wu ɲa.

Ta Musa wo funana li ɲɛ Isa?
Mm, Musa wo wu ɲɛ Isa.

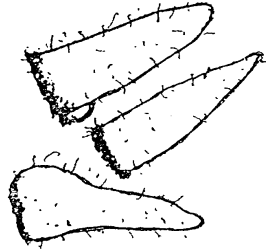
7. Ta funana l'a nù wu ɲa?
Mm, l'a wu ɲa. Nù w'a li su.

8.

fff

fu

1.



faa
aa
a

fùu
ùu
u

a	a	u	u
aa	aa	uu	uu
faa	naa	fuu	nuu

3. faa
naa
fuu
nuu

fu	fa	na	nu
fuu	faa	naa	nuu

5. fuu
naafuu

7. Fanhafɔɔ Dubya ni wu Pɔnɔ

Caɗa ka, fanhafɔɔ Dubyapɔɔɔɔ ni wu Pɔnɔ l'a nakaara suri. A Pɔnɔ li jo: «Dubya, ne pɔɔ mu na, ne kaa ya dan fanhafɔɔ wu ni.» A Dubya wu jo: «Pɔnɔ! Kafineye mu ya jo me, ne pɔɔ mu na.» A Pɔnɔ li jo sanha na: «Ni li wa lere, fanhafɔɔ wu ba diin nijaa, wù beeri pu she so wo wu seegɛ ki na.»

Ba fanhafɔɔ w'a pa foro tiin we, a Dubya di nɔ, na so wo seegɛ ki na. A pii tee pɔ laha wà, a Dubya wu doro sinne wu tãan. A Pɔnɔ li be di yiri na dugi seegɛ ki na, na ganha na zhaa da soni. A pii publiin lo na li kpɔn, a li baa foro. A Dubya wu yiri taha li na. Ba Pɔnɔ l'a she yere we, a Dubya wu nɔ na jo: «Najii! Dii ne da mu pye we?» A pii dun.

Lee l'a Dubya ni Pɔnɔ pye pu ya beni we.

Talene: Ma ba da penɛ tagi, ma fenhe maye tagi.

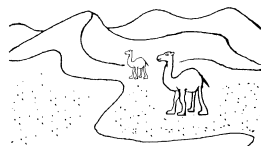
8.

zanha

kpɔnhɔɔ



zanha
anha



gbazhenhe
enhe



kponhɔɔ
ɔnhɔɔ

2. an | en | ɔn
anha | enhe | ɔnhɔ

3. anha
enhe
ɔnhɔ

4. zhehe | shɔhɔ
zhenhe | shɔnhɔ

4. taha | fehe | tɔhɔ | gaha
tanha | fenhe | tɔnhɔ | ganha

5. fanha | zhenhe
fanhaŋa | gbazhenhe

zhenhe | kɔnhɔ
shizhenhere | kɔnhɔrɔ

6. W'a fuu li na.

W'a fùu ki na.

W'a funana li na.

6*. faa fuu

fàa fùu

7. Musa w'a fùu ki faa.

Funana l'a nù na fùu ki ni.

Nù w'a foro fùu ki ni.

8.

aa

u

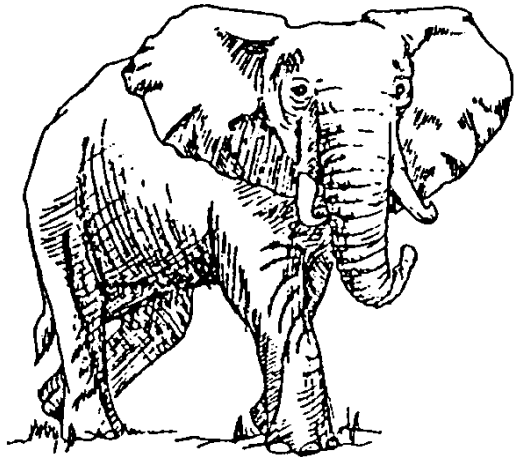
faa

nuu

33

33

1.



suu
su

2.	u		a
	su		sa
	suu		saa

3. su
suu
sa
saa

4.	naa		nuu
	faa		fuu
	saa		suu

5. saa
saana

7. **Fuvugo ni Jason**

Fuvugo ni Jason wu bye goo ni. A Fuvugo di ba she Jason kereye ni. A pii faa wu pye na caɲa ki werɛɲɛ. Ba yalige k'a pa ba wɛ, a Jason sho wu pu yiri tige ki nɔhɔ ni. A pii pu keye je, a Fuvugo di yiri na ma yalige ki mu: Vuɲi...! Vuɲi...! Vuɲi...!» A Jason di jo: «Napii! Ma ba ma talige ni de, ma ganha ba yameheɛ suu wɛ. Kuri she ma keye yi je.» A Fuvugo di guri. Yani ki pa ge, a Jason di yalige ki beeri li.

Caɲa ka, a Jason be di ba she Fuvugo kereye ni. Ba yalige k'a pa ba wɛ, a Fuvugo di jo: «Jason, wu she wu keye yi je.» A Jason di she wu keye je, na ganha na sirani na ma: Virico...! Virico...! Virico...!» A Fuvugo di jo: «Ee, napii! Kuri she ma keye yi je, y'a nɔrɔgɔ.» A Fuvugo be di wu yaha wa, na yalige ki beeri li.

Na da kee caɲa ki na, a Fuvugo ni Jason wo goo wu gyɛɛgi.

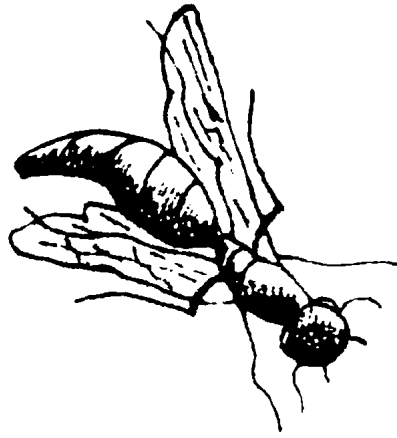
Talene: Kile bu ni, pu beeri p'a keye teri pu gbahaa na.

8.

levoo

fuvugo

1.



fuvugo
fuvu
vu

u	an	ii	en
vu	van	vii	ven

3. vu

van	4. gbu	gban	gbii	gben
vii	kpu	kpan	kpii	kpen
ven	vu	van	vii	ven

5. va	vε	vɔ
gavaga	veri	gevɔɔ

voo	voo	van
kavooɔ	levoo	kavan

6*. Shɔngɔ k'a fya. Kaafa w'a foro.
Wu da vya wε. Safo be na voro.

6. Nana w'a li.
w'a li.

Funana l'a nù wu kɔri.
l'a wu kɔri.

Funana l'a foro,
na nù wu ja,
na wu kɔri.

7. Suu wu jε fùu ki ni.
Musa w'a wu ja wu na fùu ki li,
na wu sa, na wu kɔri.

8.

SSS

saa

suu

44

44

1.



fi
i

2.	i	i	i
	fi	ni	si

3.	fi	fii
	ni	nii
	si	sii

4.	fa	na	saa
	fu	nu	suu
	fi	ni	sii

5.	Si	ni
	Sina	faani

(37)
A Xɔbere di jo: «Zhiga, mu ya taan de! A Zhiga ki li pye: «Ta mu ya ne funɔɔ na?» A Xɔbere di jo: «Ki she na na di ki na.» A Zhiga di ki funɔɔ mugi, ki beeri je wari, sanni, kuunnɔɔ, ni faya. A Xɔbere di je na li nidaan woyo shɔɔnri, na gari puga.

A Sadoɔɔ sho Sunbo di ba she na lo Xɔbere kaban na yee yanmuyɔ yi na, na fyaala kari wu poo Sadoɔɔ feni, na she dunɔɔ lo na ki kɔn, na jo: «Yiri, yiri ma be di she faya ya sha, Xɔbere l'a faya ni kuun kan li sho mu!» A Sadoɔɔ di gon foro, na she Xɔbere yege na: «Mii mu da ye ta we? Yi tataga she na na!» A Xɔbere di Zhiga ki xuu she ki na, na yi beeri naha jo ki mu.

A Sadoɔɔ di baa kari Zhiga ki nɔɔ ni, na wakaraa jo: «Mu jime p'a taan Zhiga!» A Zhiga ki jo: «Na nehe!» A Sadoɔɔ di sira, na ki kon nehe, na guri jo: «Mu ya taan.» A Zhiga ki ki pye: «Mu ya ne funɔɔ nehe ya?» A Sadoɔɔ di jo: «Fyaala ki she na na.» A Zhiga di ki funɔɔ mugi, a Sadoɔɔ di jo: «Ki to, ki to, n'a da mu tugo da se puga!»

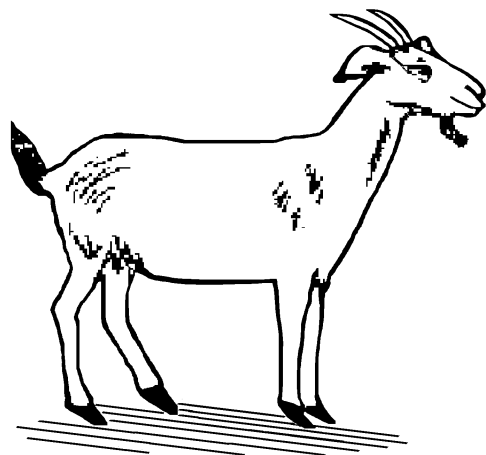
A Sadoɔɔ di gushaa migile, na ki nɔɔ le Zhiga ki taan. A Zhiga di ki kɔn feri.

Talene: Kile bu ma togo kegi, w'a
naarigana she ma na ga maye
pyaa bu ki kegi, ma da da fuulo.

8.

$$\underline{\underline{2+2=4}}$$

1.



sika
ka

2.	a	i	u	aa
	ka	ki	ku	kaa

3.	ka			
	ki	4.	sa	si
	ku		fa	fi
	kaa		na	ni
			ka	ki
				suu
				fuu
				nuu
				kuu

5.	ka	kaa	ka
	sika	kaafa	kasaa
	sikana		kasaana

7. Sirege ni wu Yatɔɔgbaha

Wu ya sɔɔ wu yatɔɔɔ y'a shuun kpeenge na we. Ba niga ya mugi we, w'a wu kpaan lɔ taha wu kapaɲa na, na gari ni yatɔɔɔ yi ni sige ni. Wu bu she saha ni naɲereɲe ni, w'a ka kɔn shan yi mu. Waga bu yi ta, w'a yi kɔri she dugo ki ni, y'a she gba. Wu ya sɔɔ w'a yi kpuun we.

Wu yatɔɔɔ yi ya ye gbeɲege na we, ga na sii pele pele shen. Wu funɲɔ ya wuu wu kpaan ki na tuun wa shishiin ni we. Bani k'a wu tɛri wu yatɔɔɔ yi ɲɔshaga ki na. Ba kpanga ya foro, a ɲapurege di bye ki ya da nige we, w'a yi pɔ wu gba wu ɲime pu ni, na yawaara shaan yi tɔan wà. Yatɔɔgbaha fɔɔ nijeme wu ɲe Sirege wemu ya wu yatɔɔɔ kemee ge.

Talene: ɲɔfaanga k'a dugo fyale xuli.

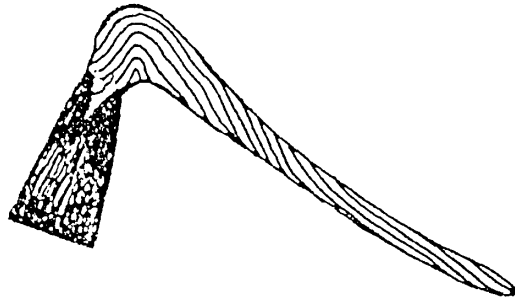
8.

kpɔn

kpaan

kp Kp

1.



kpaan
kpa

2.

aan	ᵛᵛᵛ	ᵛᵛᵛ	iin
kpaan	kpᵛᵛᵛ	kpᵛᵛᵛ	kpiin

3.

kpaan
kpᵛᵛᵛ
kpᵛᵛᵛ
kpiin

4.

caan	ᵛᵛᵛ	cᵛᵛᵛ
kaan	kᵛᵛᵛ	kᵛᵛᵛ
gbaan	gbᵛᵛᵛ	gbᵛᵛᵛ
kpaan	kpᵛᵛᵛ	kpᵛᵛᵛ

5.

kpᵛᵛᵛ	kpaan	kpii
kpᵛᵛᵛᵛᵛ	ᵛᵛᵛᵛᵛᵛᵛ	ᵛᵛᵛᵛᵛᵛᵛᵛ

kpa	kpᵛᵛᵛ
ᵛᵛᵛᵛᵛᵛᵛ	kpᵛᵛᵛᵛᵛ

6*. Tiire w'a **kpᵛᵛᵛ**. Isa w'a wu pya **kpuun**.
Tiire wu da **gbᵛᵛᵛ**. Kafaya w'a **gbuun**.

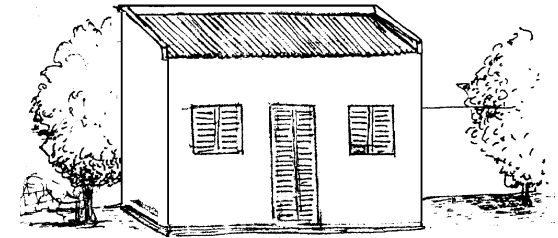
6.

Isa w'a nù wu kᵛᵛᵛ fùu ki ni, **a wu di foro.**
a wu di foro.

Isa w'a sika kᵛᵛᵛ fùu ki ni, **a wu di foro.**

6*.

Isa w'a nù wu kᵛᵛᵛ fùu ki ni, **a wu di foro.**
a nù wu di foro.
w'a foro.



puga

7. Sina nu w'a sika ᵛᵛᵛ puga ki ni,
na wu kᵛᵛᵛ, a wu di foro.

8.

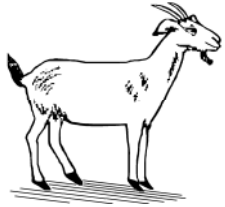
kk

ki

66

Wù kuri kadugo

1-8



sika



nà



funana



fi

4.	a	i	u	aa	uu	ii
	fa	fi	fu	faa	fuu	fii
	ka	ki	ku	kaa	kuu	kii
	na	ni	nu	naa	nuu	nii
	sa	si	su	saa	suu	sii

6. Suu na fùu ta, ta wu na ki li? Mm.

Ta funana l'a li nu wu ja puga ki ni?
Mm, l'a wu ja.

Ta Sina nu w'a suu ja puga ki ni?
Ahayi, wu ya wu ja we.

7. Kilezaṅa lozogo (35)

Zana ṅe lozo de. Wu kabee be da sin shen. Caṅa ka Zana napii Kilezaṅa ya kari sige ni wu she lozogo pye. A wu she shenzege ka ta biritahaṅa ka ni, na kee ja fo, a kee di gburogi wu feni, a wu wakara dugi tige ka ni, a mafan wu sho to. A shen wu diin wu ncho ni.

A Zana be di ba foro lozogo ki feni. W'a jono je yaworo ti ni we, na ganha na sipyaa nuri. A wu ganha na beele na se. A shen wu ba gara wii na wu be ja, na gburogi tii wu na. A wu yere wa na wu peelee zo we ni, na wu tirege.

A wu fulo tige ki na, na she wu napii Kilezaṅa ta ki fugba ni wu mafan di ṅe ṅiṅe na. A wu jo: «Na dii we na we?» Tajogo ṅe we. Zana kaa be we, Kilezaṅa wo ke caṅa ke wo lozogo ki bi da daan wu na we.

Talene: Nabeḷge nidaan kaa l'a wu fe.

8.

lozo

zofo

z Z

1.



lozo
zo

2.	o	uu	ɔ	ee
	zo	zuu	zɔ	zee

3.	zo	4.	sho	shuu	shee
	zuu		ɲmo	ɲmuu	ɲmee
	zɔ		gbo	gbuu	gbee
	zee		zo	zuu	zee

5.	zi	zan	zaa	zɔ
	zirana	zanlogoo	fazaana	zɔlɔɔ
	zo	zan	zuu	
	lozogo	kazanga	zuuyo	

6*. Isa w'a **sira**. Sika nigin w'a **se**.
Sina wu da **zira**. Shuun w'a giin di **ze**.

6*. Nu w'à foro.
Nù w'a foro.
Suu w'a fùu ki lí.
Suu w'a fùu ki li.

7. Ta funana l'a fùu ki li puga ki ni?
Mm, l'a fùu ki li ni Musa ni.

8.

faa

nuu

kk

ki

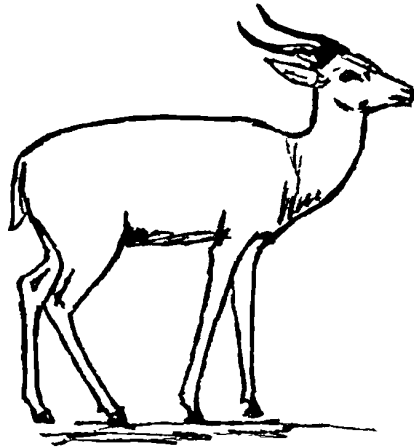
sii

ni

11

22

1.



ᵛᵛ
ᵛ

2. ᵛ | ᵛ | ᵛ | ᵛᵛ
 ᵛᵛ | nᵛ | fᵛ | kᵛᵛ

3. ᵛᵛ
 nᵛ
 fᵛ
 kᵛᵛ

4. suu | nuu | kuu
 ᵛᵛᵛ | nᵛᵛᵛ | kᵛᵛᵛ

 sa | na | ka
 ᵛᵛ | nᵛ | kᵛ

5. ᵛᵛ | nᵛ
 ᵛᵛᵛᵛ | nᵛᵛᵛᵛ

7.

Gbeeshinme

Musa w'a gba wá wu kadaan na. Na gbee sin gba wu nᵛᵛᵛ ni. Ba ruᵛᵛᵛᵛᵛᵛ ki wo labye w'a xᵛ wε, w'a ganha na wee gbee wu shin. Wu kaafεε na ba she diin wu tãan, p'a ganha na te kani na gbuu, Musa di gbee wu shin.

Te bu bye wu ya ta Musa mu caᵛa kemu wε, p'a gbeᵛεᵛεᵛ gbeᵛεᵛεᵛ pinne, na she te wa shᵛ, na ba wee taha na gbuu. Musa ya gbara wu tiin wu keye shᵛᵛᵛ yiye ni la pye baa wε. W'a sii labye já xuuni.

Talene: Kazogi kazogi w'a nà sᵛnrᵛ tᵛᵛngi.

8.

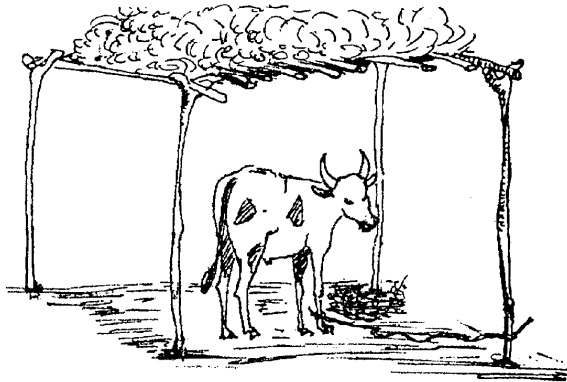
gba

gbo

1 + 2 = 3

gb Gb

1.



gba

a	i	ε	ɔ
gba	gbi	gbe	gbɔ

3. gba
gbi
gbe
gbɔ

ja	je	jɔ
na	ne	no
ga	ge	go
gba	gbe	gbɔ

gbɔ	gbe	gbe	gbaa
gbɔɔ	gbenεge	gbenigbe	gbegbaara

6. Safo w'a kaafa **niine**.
Safo w'a sika **niine**.

Sɔ w'a **shɔ** Safo na.
Kaafa w'a **shɔ** Safo na.

Sina **ya** suu wu na.
Nana **ya** suu wu na.

7. Nana w'a sɔ na fa ki ni,
a Safo di wu niine,
wu ya wu ta wε.
A sɔ wu shɔ.
A Nana di Safo sa.

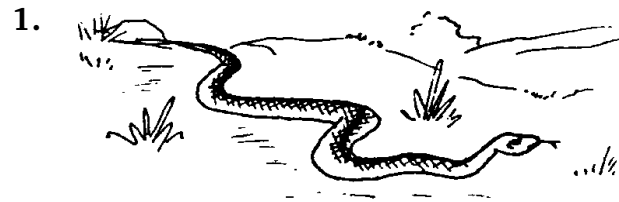
8.

ɔ ɔ

sɔ

7 7

7 7



wɔ

2.	ɔ	a	i	u
	wɔ	wa	wi	wu

3. wɔ
wa
wi
wu

4.	kɔ	ki	ku
	nɔ	ni	nu
	sɔ	si	su
	wɔ	wi	wu

5.	wɔ	wa
	nuwɔ	waswa

6*. Xaara w'a cere. Caa w'a caaga.
Xaara w'a da jere. Caa w'a jaaga.

7. **Jaa Faa**

Kajana w'a jaa fyenmi, na wu shɔ pye na w'a se w'a lɔhɔ yuu wu na. A cee wu ganha na se na lɔhɔ ki yuu jaa wu na. Lee bi jɔ be ta wu na jɛ Kajana mu. W'a ba gari fa ki ni jɔ wu tawaga ni.

Caɲa caɲa w'a she fyaa gbo. Cee wu na ba jasaya ye shɔnri, na yee kaa, p'a yee xa. A jaa wu ba le, a Kajana di she jaa wu tugi, na wu keme je, na wu caa. Na ba she wu pere. Kajana bi sii wari ta shen xuuni jaa wu ni.

Talene: Kabee nigin ya já kabuugo shiga gba we.

8.

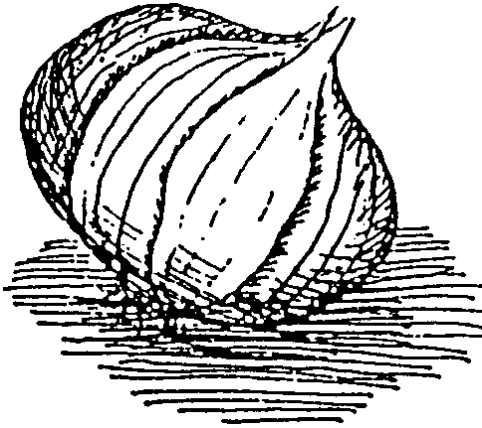
jaa

jé

j J

33

1.

jaa
ja

2.	aa	e	ε	oo
	jaa	je	jε	joo

3.	jaa	4.	ηmaa	ηme	ηmε	ηmoo
	je		caa	ce	cε	coo
	jε		jaa	je	jε	joo
	joo					

5.	ja	joo	je	ji	jii
	jasana	joomo	jege	jire	kajiige

6*.	je	cee	wu	ja
	je	cèe	wù	jà

6. Nù w'a **je** fùu ki ni.
Nù w'a foro fùu ki ni.

Wɔ w'a **je** puga ki ni.
Wɔ w'a foro puga ki ni.

Kaafa w'a **je** fùu ki ni.
A Isa di wu na, wu di ya wu kori wε.

6*.	wu	w'a	wee
	wù	w'à	wèe

7. Sika w'a **je** puga ki ni.
A Sina di wu na, wu di ya wu kori wε.

8.

w w

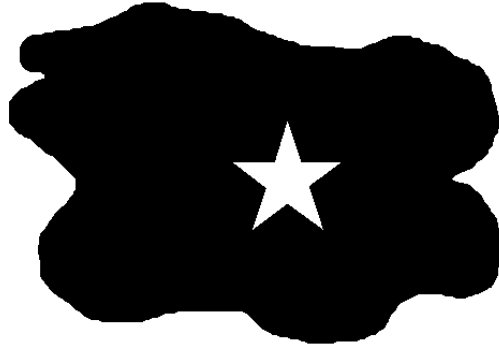
W u

8 8

8 8

r R

1.



wɔɔ
ɔɔ

2.

ɔ	a	i	u
ɔɔ	ara	iri	uru

3.

ɔɔ
ara
iri
uru

5.

nɔɔ	firi	kari
wɔɔ	niri	wari

Caɗa ka, a Kotunnɔ di ba Sikapeere pye: «Nan̄ii Sikapeere, n’a da ba shiimye pa kan ma mu, ma be di da duri tiye ni ba ne je we.» A lee di daan Sikapeere ni xuuni. A li sira she me, na sira pa me, na Kotunnɔ pye: «Sababu ya cere we, mu ya ce na ne be nan̄ii wu je ponɔ. N’a da ba shiimye pa kan li be mu.» Yee ya taan Kotunnɔ mu we. A wu jo: «Ee! Sikapeere, ponɔ bu tidugunɔ jaha ce, ne Kotunnɔ na bye dii we? Ponɔ wo nan̄eɛge k’a bi ni li jo ni, li yogo be di bi ni li jo ni, lee bu bye jine na, lee ya pɔɔ de! Wee bu ben, ne Kotunnɔ na dugi tige ni. Kile ya yaa wu ponɔ yaha li tidugunɔ jaha ce bada we.» Ba lee ya pye we, a wu shiimye pu kori wo Sikapeere keɗe ni. Shiimyerɛ lemu l’a mara Sikapeere keɗe ki na ge, a Sikapeere di lee laala.

Lee l’a Sikapeere pye li na duri titoyo, ni kasɔɔɔ na.

Talene: Caɗa caɗa juwyii ya se kalaa ni.

8.

genmori

jile

Wù kuri kadugo

25-32



shɔngɔ



sadonɔ



jile



genmori

Kamapyaa kiimu k'a yu munahaa ni ge:

n, m, ɲ, ŋ, ŋm

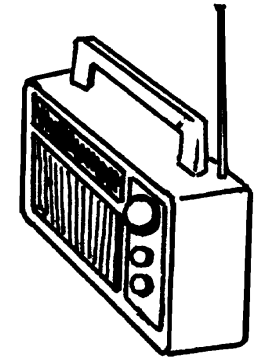
- | | | | |
|----|--------|---------|-----------|
| 4. | piin | kaban | kafaan |
| | nii | kasaana | ná |
| | mii | yama | maa |
| | jii | gaja | ɲaa |
| | gaɲi | fàɲa | kasaanɲaa |
| | kaɲmii | ɲmaɲma | ɲmaa |

7. Sikapeere ni Kotunno

Taashiine ni Sikapeere ni Kotunno wu bye napeege ni. A pii bye puye feni cana ni piige. Cekaanra bu bye Sikapeere mu, l'a nohopiire pye t'a she yi jo Kotunno ni wu puga shiin mu. Pee na pu wo dege kan, na noho she ti xuu ni. Ti bu bye nuxhuuro be, p'a she ni naanmoho ni jege ni. Mu Sikapeere be di wa na Kotugoo kalenge pi.

- 6. Ta Isa ya wari wu lo? Ahayi, w'a ta wu lo we.

Ta na w'a arajo wu lo? Ahayi, wari wu w'a lo.



arajo
ara

- 6.* na wa
na wa
na

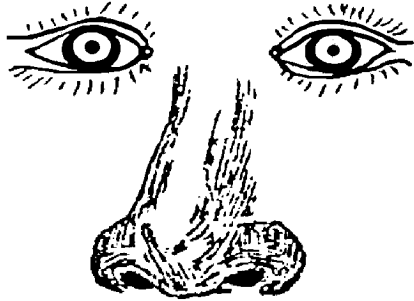
- 6. Na w'a foro, na baa. w'a foro, na baa.
- 7. Na wa w'a je Musa puga, na wu wari ta wa, na wu lo, na baa foro. A Isa di wu ja.

8.

rrr

wari

1.



munaa
mu

u	aa	ii	ɔ
mu	maa	mii	mɔ

3. mu
maa
mii
mɔ

nu	naa	nii	nɔ
ku	kaa	kii	kɔ
mu	maa	mii	mɔ

ma	muu	ma	mɔ
kama	kamuu	Saama	suumɔ

7.

Kacaalene

Kacaaga p'a le, a Sina be di gari wà. Pono la di je wu mu li mege je na kaŋma. A na ki sige yaŋmuyɔ beeri pye y'a tin. A kaŋma di ba so noho lo, na she wu shan, na wu geŋmaga firi. A Sina di wu ŋmuu koŋgi na gara wee kuun.

A geŋmori di suri kotunno naja ni, na ba wolo to, na yiri dugi ŋmoronmorogo tige ni. A kaŋma di kotunno wu be noho lo, a ŋmogara di ba she wu shoho. A wu do, a kaŋma di wu be geŋmaga firi. A Sina di ŋmuu li taga wee be kuun. Kee sige ki bi taan shen Sina na.

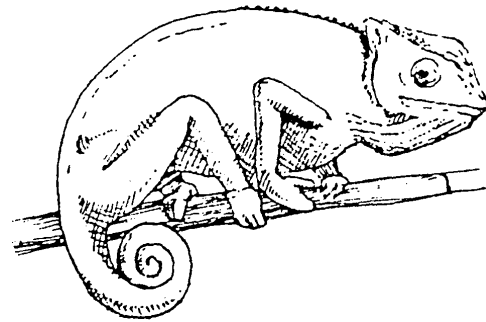
Talene: Kasooɔ ya ja we, lige da tajege ta we.

8.

ŋmuu

ŋmo

1.



geḡmori
ḡmo

2.	o	uu	aa
	ḡmo	ḡmuu	ḡmaa

3.	ḡmo	4.	sho	shuu	shaa
	ḡmuu		co	cuu	caa
	ḡmaa		wo	wuu	waa
			ḡmo	ḡmuu	ḡmaa

5.	ḡmii	ḡma	ḡmu
	kaḡmii	ḡmaga	ḡmunumɔ

	ḡmaha	ḡma	ḡma
	kaḡmahaja	ciḡmaja	ḡmari

6. Nana **da** maa li wɛ.
wɛ **da** maa li wɛ.

7. Masa w'a Musa ḡa wɛ na fùu faani,
na waa kari wà.
Masa ya sii mɔ wɛ da Musa ḡa wɛ.

8.

m m

Musa

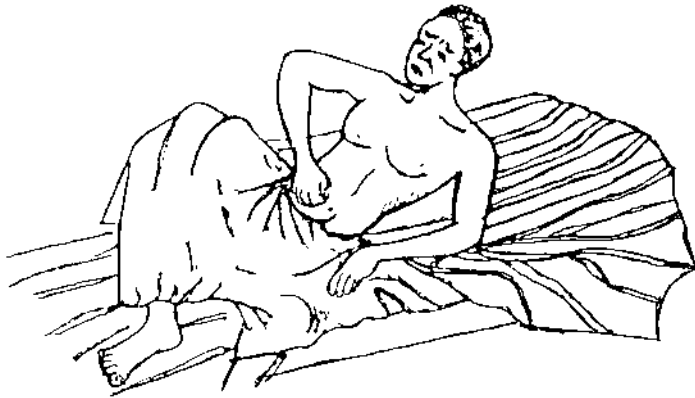
9 9

9 9

6 6

6 6

1.



Masa w'a yá.
yá

2. a | u | i | ɔɔ
 ya | yu | yi | yɔɔ

3. ya
 yu
 yi
 yɔɔ

4. na | nɔ | nii | niri
 fa | fɔ | fii | firi
 ya | yɔ | yii | yiri

5. ya | ya | yuu | ya
 kafaya | yama | kayuu | faya

6*. kyɛɛgi gyɛɛgi pya
 xaara xhuu pɔɔ

7. **Xowuunɔ**

Xowuunɔ bu nɔ sipyii ya ɲmunɔɔ na dinni wɛ. Ba xhupoo ya mii su wɛ, p'a yiri na gaanɔ xɔɔɔ ti feni.

Faapyii bu bye wemu mu, wufɔɔ na xaara sho kelee w'a xhùu gbo pu mu.

Xhuuro ta ti ma bye xɔɔɔ ni ti mege ki ɲɛ na yamefeheɲɛ. Ba m'a nɔ tee ta na wɛ, xɔɔɔ ti wuumɔ na ben. Tee xhuuro ti na ma kabehɛ ki bæri sogolo, fo na ki pye ki na ma yá.

Talɛɛ: ɲiilee ya xhuli, ga ɲuwyiilee ya xhuli wɛ.

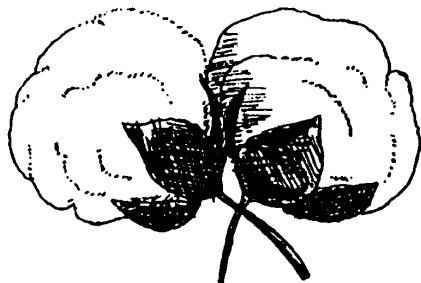
8.

xɔ

pɔɔ

1 2 3 4 5 6 7 8 9 10 11 12

1.



xɔɔrɔ
xɔɔ



xhupoo
xhu

2.	ɔɔ	o	a	u
	xɔɔ	xo	xha	xhu

3. xɔɔ
xo
xha
xhu

4.	wɔɔ	wo	wa	wu
	gɔɔ	ko	ga	ku
	xɔɔ	xo	xha	xhu

5.	xaa	xhu	xa
	xaara	xhupoo	yaxaga
	xuu	xhu	
	xuuni	xhuli	

6. Fi w'a sɔ nɔ na gbo.
Wɔ w'a nuu nɔ na gbo.

Musa w'a ya jo wu mu.
w'a ya jo wu mu.
w'a ya jo

6*. yiri ya
yíri yá
yìri

7. Ná wa w'a Musa wo sika yu,
na wu gbo.
A Isa di wu ja,
na yi jo Musa mu.

8.

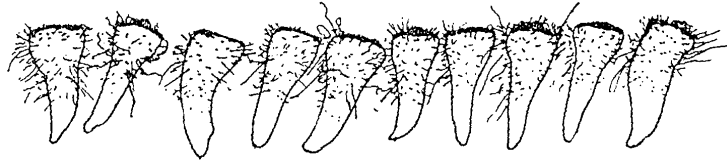
yá

yi

10 10

10 10

1.



fùu ke
ε

ε	ε	ε	ε
ke	we	ne	ere

3. ke
we
ne
ere

ka	wa	ara
ku	wu	uru
ke	we	ere

ne	me	me	ere	ere
Mamine	kamene	nime	sere	nerere

6*. nii cee fuu
nii cèe fùu

7. **Ɔforogo Ɔɔ**

Nana Ɔɔ k'a fori fo na nɔɔɔ kɔn wu jile na. A wu Ɔɔ di ben. A wu ba she nù jere shɔ, na ba li kan wu shɔ Ɔeba mu na wu li kaa, wu pedanhara ye le, wu ganha bu suumɔ le we, mirikaan be we.

A Ɔeba di jere li kaa na pedanhara ti le, na suumɔ be le ni mirikaan. Na ba li kan Nana mu, a Nana di la wolo wa wu Ɔɔ ni, a jile li sii na wu sorogi.

A wu Ɔeba yiri na wu pye na jaha k'a pye we? A wu jo na wee funɔ k'a wɔ. Nana ya jere li gaɔɔ sha nige we. A wu nanii Ɔime di ganha na wu la wɔ.

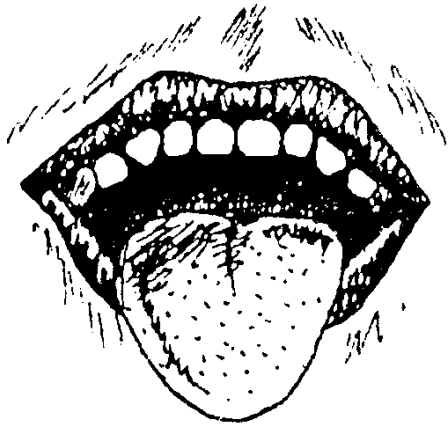
Talene: Kanagaa k'a cenri nii jaɔɔ.

8.

nii

nina

1.



ɲile
ɳi

2.	i	ɛ	a	ii	aa
	ɲi	ɳɛ	ɳa	ɳii	ɳaa

3. ɲi
ɳɛ
ɳa
ɳii
ɳaa

4.	din	dɛn	dan
	ni	nɛ	na
	ɲi	ɲɛ	ɲa
	ɳi	ɳɛ	ɳa

5.	ɳa	ɳa	ɳɛ	ɳaa
	gɳa	ɳabige	ɳɛpiin	ɳiɳaa
	ɳee	ɳɛɛ	ɳɔɔ	
	tɳee	ɳɛɛɛ	ɳɔɔɔ	

6.

Mami ya **shɛ** maa wu faa.
W'a **shɛ** wu faa.

Isa w'a Musa nuu gbo, a Musa di **ba** wu sa.
a Musa di **ba** wu sa.

7. Nana ni Wasa w'a shɛ
fùu ke shɔ Masa mu.
A Wasa di ba ki saa,
na ki kaa li wu yɛ.
A Nana di ba ɔ,
wu ya fùu ki ɲa wɛ, na fɔ.

8.

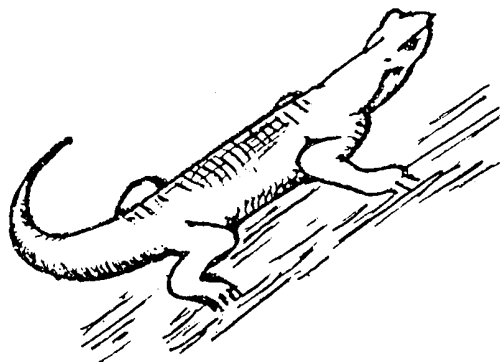
wɛ

kɛ

ɲɲ

ɲɲ

1.



kak᠋ᠣᠨ
k᠋ᠣᠨ
᠋ᠣᠨ

᠋ᠣ	a	u	i	ɛ
᠋ᠣᠨ	an	un	in	ɛn
k᠋ᠣᠨ	fan	sun	fin	kɛn

3. k᠋ᠣᠨ
fan
sun
fin
kɛn

k᠋ᠣ	fa	su	fi	kɛ
k᠋ᠣᠨ	fan	sun	fin	kɛn

fun	k᠋ᠣᠨ	kan
funm᠋ᠣ	funk᠋ᠣᠨ	kanra

7. **Tudugoo Saance**

Pamuce kacerege katinne l'a kegi.
A wu she ki kan tudugoo Saance mu.
A Saance di kacerege ki kori, na ki
keme cee, na ki yaha she gan
Pamuce mu. A Pamuce di kacerege
ki co, na ki sin ceje tige na.
Na ki yaha k'a cewuu pye wa.

Talene: Sikapoo ya sado᠋ᠵ᠋ᠣ tiine ceni
wu li lo we.

8.

co

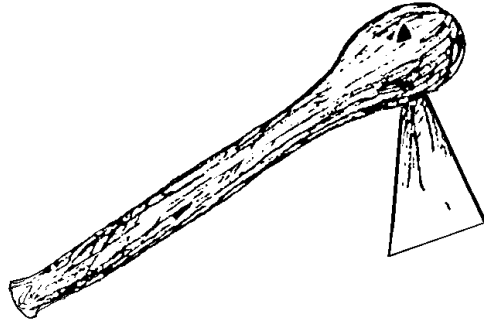
cee

1 2 3 4 5 6 7 8 9 10 11 12

c C

29

1.

kacerege
ce

e	ε	o	aa
ce	cε	co	caa

3. ce
cε
co
caa

be	bε	bo	baa
de	dε	do	daa
ce	cε	co	caa

cεε	ce	ce
yacεε	cewu	ceboro
cii	co	ce
kaciige	cogana	cεε

6. Sika w'a kakara **pye** puga ki ni.
w'a kakara **pye** puga ki ni.
w'a kakara **pye**.

Sina w'a Isa arajo wa, a **pii dun**.
a **pii dun**.

6*. sinme
s̄inme

7. Saama ni Funkɔn w'a maa faa pye.
Na ba wu kɔn, na wu sa.
A Saama di ba wu faa nuunɔɔ na,
wu ya nuu wa kan Funkɔn mu wε.
A pii dun.

8.

kakɔn

sun

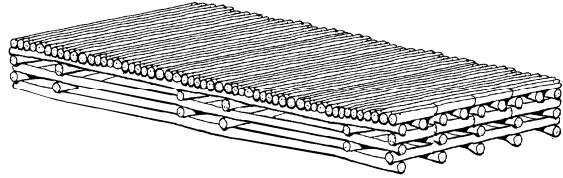
1 + 2 = 3

1 + 2 = 3

g G (g)

16

1.



karaga
ga

a	ɔ	u	an	a
ga	gɔ	gu	gan	aga

3.

ga
gɔ
gu
gan
aga

wa	wɔ	ɔrɔ	ɛrɛ
ya	yɔ	ɔgɔ	ɛgɛ
ga	gɔ		

gan	gi
Keganga	sigiri

aga	ga	ɔgɔ
waga	puga	nɔɔgɔ

7.

Wu she Dugo ni

Sina ni wu kaafɛɛ p'a lɔhɔ wuri dugo ki ni. A Kiitiri be di gari wà ni wu nu fàya ni. A wu nɔ na pu shaari lɔhɔ ki ni, a pii fehe fehe puyɛ na. A Kiitiri di sii shehe fo na laha to.

A Sina ye di ba foro lɔhɔ ki ni, na wá wu na, na wu sa. A wu be di Sina paha, na ganha na pu shehele. A pii laha wu tãan na ba deeye ni.

Talensɛ: Kapegee shuun bu kiye ta koo na, la li da la le koo ni.

8.

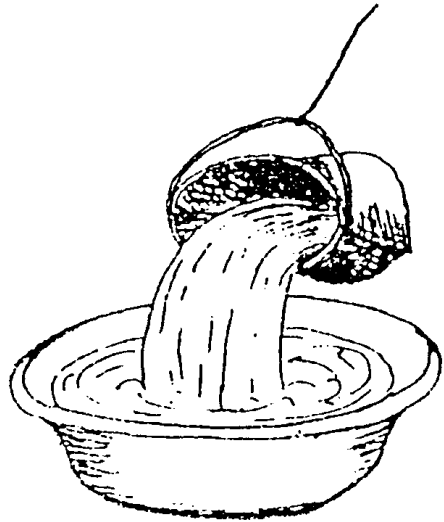
shɔhɔ

yaha

1 + 2 = 3

aha ehe oho

1.



lho
oho
o

2. o | a | e
 oho | aha | ehe

3. oho
 aha
 ehe

4. lro | dara | tere
 lgo | daga | tege
 lho | daha | tehe

5. shehe | oho | tehe
 shehele | kaloho | tehene

shoho | baha
shohori | bahana

6. Sika w'a je Sina puga,
 na **ganha na** wu maa kuri.

7. Nogo ka ki je Nana nu Keganga na,
 kee nogo k'a wu pye w'a faan.
 A wu ganha na mii suu, na she sinne
 wu karaga na wu puga. A Nana di ba
 she wu ja wa, na she yi jo Musa mu.
 A Musa di were kan wu mu w'a she
 gan wu mu.

8.

gg

waga

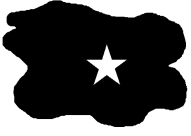

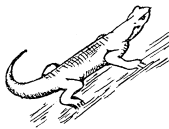
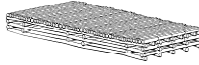
33

44

55

Wù kuri kadugo

9-16

1.    

wɔɔ munaa kakɔn karaga

3.	wɔ		wɛ	4.	fin		sin		gin
	yɔ		yɛ		fan		san		gan
	gɔ		gɛ		fun		sun		gun
	mɔ		mɛ		fɔn		sɔn		gɔn

4.	ɛɛ		ɛgɛ
	ara		aga
	ɔɔ		ɔgɔ
	iri		igi

5.	iri		ɛɛ		aga		fun		kan
	sigiri		sɛɛ		waga		funmɔ		kanra
	muu		yuu						
	kamuu		kayuu						
	nɛ		ya						
	mine		faya						
	Mamine		kafaya						

6*. kaa yiri wa
 káa yíri wá
 kàa yìri wà

7. Sadonɔ ni Sɔ

Sɔ w'a yiri na saala sige ni, na she su Sadonɔ na k'a sinne neɛe ka fee ni. Ki da kee caɲa ki beeri pye ki ya li we, na faaɲa.

A Sadonɔ ki sɔ pye na ta w'a kee laashoo le ɲa koo li na? A Sɔ di jo na mm, na wee ya laashoo la ɲa li na figi kidana ka geɛe na. Na Sadonɔ ki wee sige wu baa she li lo pa. A Sɔ wu gari. Ta Sadonɔ na bu sɔ ɲa nige?

Talene: Yegeɛe fɔɔ ya benri we.

8.

caɲa

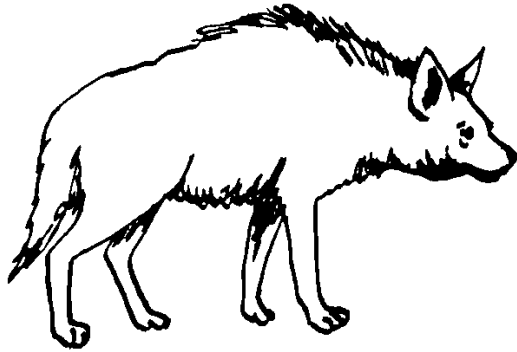
geɛe

1 + 2 = 3

1 + 2 = 3

η η

1.



sadoηɔ
doηɔ
ηɔ

ɔ	ε	a	i
ηɔ	ηε	ηa	ηi

3. ηɔ
ηε
ηa
ηi

wɔ	wε	wa	wi
mɔ	mε	ma	mi
ηɔ	ηε	ηa	ηi

ηa	ηε	ηɔ
caηa	meηε	dunηɔ
ηε	ηi	ηa
geηε	taηi	kiɔaηa

6. Safo w’a kaafa niine, wu ya wu ta we.

Isa w’a Saama nuu gbo,
a Saama di she yi jo Musa mu.

Niiye y’a Musa fùu ki li.
Musa da ba wari ta we.

7. Mamine w’a she wu fun faa fa ki ni.
A wu ganha na ma, na ba yaaga ka ja
ki na gongo li. A wu waa kari wà.
Na she jé wɔ wa ni, a wu sii fɔ wu na.
A Mamine di sira, na meege wá,
na baa kari puga.

8.

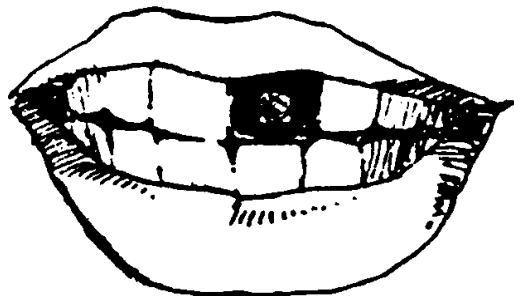
karaga

yama

wɔrɔ

kamene

1.



gaan
aan
an

2.	an	in	un	ɔn
	aan	iin	uun	ɔɔn
	gaan	siin	suun	kɔɔn

3. gaan
siin
suun
kɔɔn

4.	kɔn	kun	sɔn	fan
	kɔɔn	kuun	sɔɔn	faan

5.	saan	fiin	sɔɔn
	kasaan	fiinni	sɔɔnrɔ
	kaan	gaan	gɛɛn
	mirikaan	kagaanga	gɛɛnri

6*. Kudun w'a **toro**.
W'a wu sige, a wu ɔ na **doro**.

Dawuda ni wu shɔ w'a **tun**.
Isa w'a Sina mani ɔ, a pii **dun**.

7. **Sindaa**

Dawuda w'a sindaa kaa jo Datigi mu.
A Datigi di sindaa ki yàa, na ba ki kan
Dawuda mu.

A Dawuda di ba she sige ni, na she
kudun ja tige ka ni, na sindaa ki taga
wu gbo na pa deeye ni. A wu shɔ di ba
tidaya káa kudun wu na pu piige yalige.

Talens: Kile kayaana ya pɔɔ sipyá wuu na.

8.

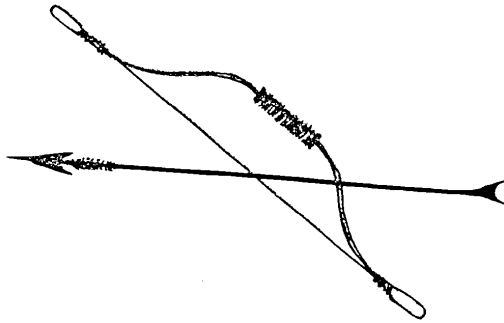
din

deeye

12 12

d D

1.



sindaa
daa

aa	ee	un	in	ε
daa	dee	dun	din	dε

3. daa
dee
dun
din
dε

4. laa	le	lo
taa	te	to
daa	dε	do

5. dee	dun	da
deeye	kudun	tidaya

du	daan	Da	du
kadugo	kadaan	Dawuda	duguna

6. Sika w'a Masa seri wu munaa na, a li **din**.
a li **din**.

Musa w'a kaafa gbo, a Masa **be** di so gbo.
a Masa **be** di so gbo.

7. Isa gaan l'a wu ya. A wu ba foro
na kari yaara ni, a kagaanga be di she
wu su wu kasaan na, a kasaan li din,
a wu faan. Isa gaan na wu ya
wu kasaan be di din nime.

8.

gaan

soonro

66

77

1.



tɔɔ
tɔ

ɔ	ɛ	a	un
tɔ	tɛ	ta	tun

3. tɔ
tɛ
ta
tun

gi	ga	gun
si	sa	sun
wi	wa	wun
ti	ta	tun

taan	ta	ti	ta
kataan	tafe	tira	tatii
kataanra	taferɛ	tiraya	tatiige

6. Tuugo **baa** Isa ya kari fa ki ni.
Tuugo **baa** w'a kari.
Tuugo **baa**

7.

Kanshɔ be na Shɔngɔ fe

Shɔngɔ ka ki jɛ Misheli mu, k'a sii shɔgɔ. A wu ki pɔ, na ganha na shogo kuun na ma na gaan ki mu. A wu ki pɔri fo na ki pye kla pele.

A wu shɔ Shita di ba jo na wu shɔngɔ ki kan wu mu wu be di she ki paa. A Misheli di shɔngɔ ki kan wu mu.

A shɔngɔ ki she wu shan shushɔn pa ni, na wu beeri nɔɔgɔ, a wu ganha na wulee. A Misheli di jo na l'a yaa ni wu ni.

Na ta shɔngɔ ya pa kanshɔ be w'a ki fe?

Talene: Shen nigin, fungɔngɔ nigin.

8.

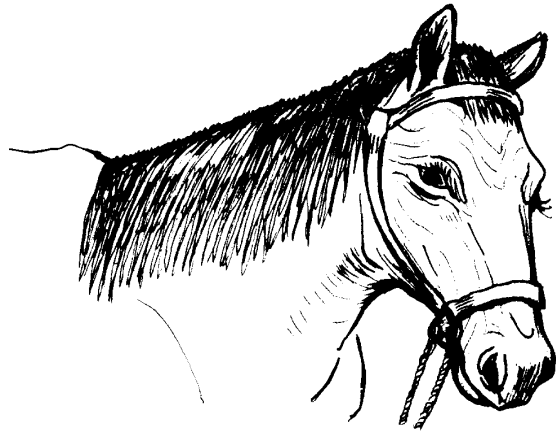
shɛ

shɔ

11 11

sh Sh

1.



shoŋgo
shoŋ

ɔŋ	an	ɛ	ɔ
shoŋ	shan	she	sho

3. shoŋ
shan
she
sho

poŋ	pan	pe	po
soŋ	san	se	so
shoŋ	shan	she	sho

shu	Shi	sho	sho
shushoŋ	Shita	shogo	kansho

6*. taan ɲa sinme
tàn ɲà sìnme

7. Fatimata w'a tɔɔɔ faa pye.
A tɔɔɔ kii ba le, a wu ganha na ki
kuun tuun tuun. A Kaafa di ba she su
tɔɔɔ tege ki na. Ta Fatimata na da
tɔɔɔ taa nige tɔɔɔ tege ki ni?
A wu ba yi jo Masa mu.
A Masa di ba she sinne
tege ki ni ni mafan ni.
A Kaafa wu ba nɔ, na jé tɔɔɔ ki ni.
A Masa di wu gbo, na ba ni wu ni puga.
Ba Fatimata ya wu ɲa we,
a li sii taan wu ni.

8.

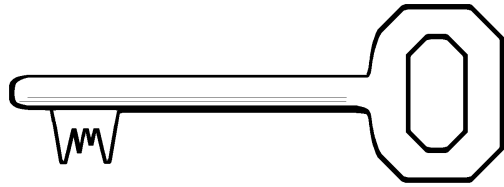
tun

tafere

88

99

1.



kenikaan
ke
e

e	e	ee	ee
ke	te	wee	fee

3. ke
te
wee
fee

kɔ	tɔ	yɔɔ	fɔɔ
kɛ	tɛ	yɛɛ	fɛɛ
ke	te	yee	fee

te	ye	te	se
kate	yege	tege	semi
katensɛ	yegensɛ	tegensɛ	

6* taan yaa
tàn yàa

7. Nana fyaa p'a piin

Nana w'a she fun pere Karimaa mu,
na buuri shɔ na ma, ni lemuri, ni tɔrɔɔ.
A wu sisee be shɔ, na fara fyaa be na,
na pee le bɔri wa ni. A wu ganha na
ma puga, na sisee ki yaha wà. Na ba jo
koo na, na wee sisee k'a kori wà kulo
li ni. A wu yerɛyɛ yi tirege, na fere lɔ
tii kulo li na. W'a she sisee ki lɔ na pa
ge, na ba nɔ na fɔ fyaa pu ni, ponɔ la
ya pee lɔ toro. A mii di shɔ wu na.

8.

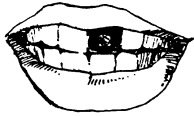
mye

pya

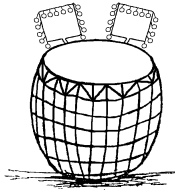
10 10

Wù kuri kadugo

17-24



gaan



bafɔɔ



kalaga



poloo

4.

e	o
te	to
pe	po
le	lo
be	bo

aan	een	uun
taan	teen	tuun
paan	peen	puun
baan	been	buun

bye	bya	fyen
pye	pya	mye
wye	fya	kye

5.

tiinne	tatorogo	wurege
ɔɔɔɔ	kalogo	Bugubεge
fyenre	kapyebye	mye
kyεεgεmε	yawyege	

6. Masa sika w'a kɔn, Masa di ya li ce we.
 Masa di ya li ce we.
 wu ya li ce we.

7. Sina w'a Isa katene lo, na gari sige ni.
 Na she tige ka kɔn, na ganha na ki te ni.
 Katene li feregi, Sina di ya li ce we.
 A katene li ba feru, na ba sin wu tɔɔɔ na.
 A wu yiri na ganha na mee suu na ma puga.

8.

teni

katene

11

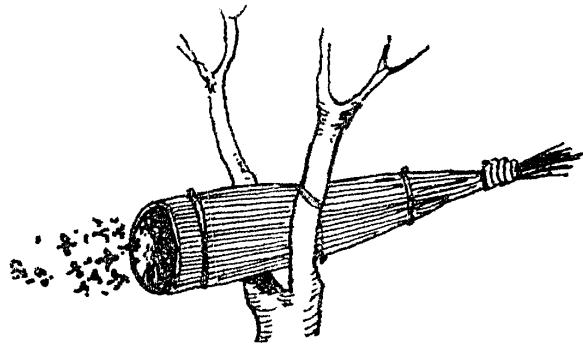
22

33

44

p P

1.



pene
pe

2.	e	i	en	o
	pe	pi	pen	po

3. pe
pi
pen
po

4.	we	wi	wa
	ye	yi	ya
	ke	ki	ka
	pe	pi	pa

5.	pa	pe	pi
	kapa	pere	pin
	kapana	pereme	pinne

6. Yatooyo Isa ya naha.
Yatooyo w'a naha.

6*. Faa w'a pye. Fya w'a kyeegei.
Faa wu da bye. Fya w'a gyeegei.

7. Yatoonahama

Dubya pu ne Musa mu. A wu she Masa pye na wu pya wa kan wu mu, wu she dubyaa pu naha. A Masa di pya wa kan wu mu, wee pya wu da sii kyeegei.

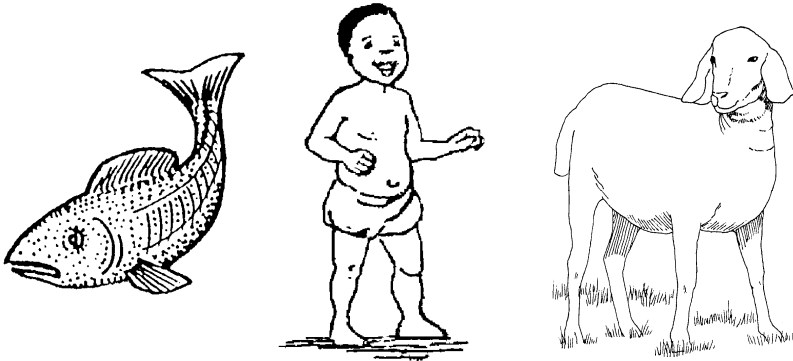
A wu ba gari ni dubyaa pu ni fa ki ni, na she wu kaafee ta pu na fyaa shaa, a wu be di dubyaa pu wa wa, na ganha na fyaa shaa. Wu ya fya be ta we, a dubyaa pii she Maami wo bereye kyeegei.

Ba w'a pa no we, a Musa di yiri wu feni. A wu baa foro, na she birege to, a ton di ganha na foro wu ginmye ni.

Talene: Sipya ya legi kalaa na we.

8.

wyege



fya

pya

dubya
bya

2. a | a | a | ε | e
 fya | pya | bya | myε | wye

3. fya
 pya
 bya
 myε
 wye

4. fa | pe | mε | be
 fya | pye | myε | bye

5. bya | wye | myε | wye
 dubya | wyεge | ginmyε | yawyεge

 byaa | pyaa | fyεn
 kabyaa | sipyaa | fyεnmεε

6. Pun wu **ɲε** Musa mu.
Pun wu **ɲε** wu mu.
7. Musa w'a penε la yàa,
na gari ni li ni sige ni.
Pun wa di **ɲε** wu mu,
a pun wu be di gari ni wu ni.
A wu she penε li tagi tige ka ni,
na li pɔ, na ganha na ma puga.
A pun wu ba pan yirege,
na ganha na wu niine.
A pan wu ba she yere.
A pun wu nɔ na wu fεri.
A wu sii pun wu sa.
A pun wu sira, na mii wá,
na baa pa puga,
wu ya pinne nige ni Musa ni wε.

8.

kapana

perεmε

55

1.



kalaga
la

2. a | i | ε | ɔ
 la | li | lε | lɔ

3. la
 li
 lε
 lɔ

4. pa | pi | pɔɔ
 ta | ti | tɔɔ
 ma | mi | mɔɔ
 la | li | lɔɔ

5. laa | le | lɔ | li | lii
 maala | pile | lɔɔ | lige | taliige

6. Buba w'a bafɔɔ **shaa**.
 Bakari w'a wu nuu **shaa**.

7. Buba w'a shε Bakari feni na wu bafɔɔ
 yàa kan wu mu, bafɔtabaaga. A Bakari di
 wu pye na leke wu da da bi ni kee bafɔɔ
 ki ni wε? A Buba di wu pye na ni w'a
 da bafɔɔ ki yàa wε, na wu yi jo wee mu.
 Na wee ya ki shaa lemu na ge, na lee
 ya Bakari lɔ wε. Buba na tiye tε ni,
 na bafɔɔ bε shaa. Keree bæeri na
 Buba ɲε.

8.

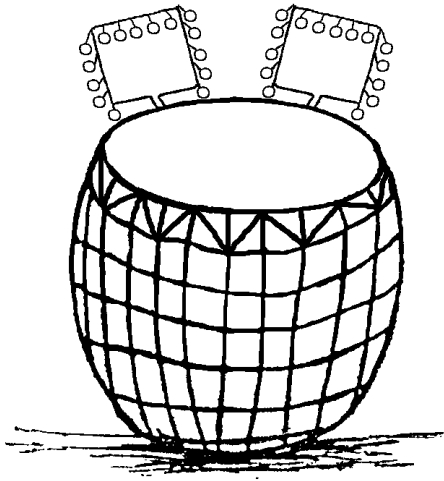
kabee

bε

66

99

1.



bafogo
ba

a	ε	i	u
ba	bε	bi	bu

3. ba	4. fa	fε	fi	fu
bε	ma	mε	mi	mu
bi	ba	bε	bi	bu
bu				

5. bu	ba	bɔ
buguloo	bafogo	bɔrɔgo
baa	ba	be
tabaaga	kabanugo	kabelene

6. Puga k'a pεε.
Mεεε t'a pa.
Suumɔ p'a wo.
Kasaan l'a tin.
Maa w'a ε.
- 6*. Sipyii pu **bye** fa ki ni.
Sikaa pu **bye** maa wu ni.
7. Silasi kalaga k'a ε,
faapyii di ɲε wu mu.
A wu she wu yalɔ Wulemε pye
na wu sɔɔ she tεge ki ni,
wu she maalaa pii kɔn.
A Wulemε di sɔɔ kari,
na she maalaa pii kɔn.
Pilee nii bε pu bye faapyii pu ni.
A pii pilee pu kan celee pu mu,
na ganha na kalaga ki kuun.

8.

lɔrɔ

pile

66

1.



poloo
po
o

o	o	oo	oo
po	to	foo	woo

3.
po
to
foo
woo

paa	saa	laa
pee	see	lee
po	so	lo
poo	soo	loo

lo	lo	lo
loka	gulo	kalo
lokana	gulogoo	kalogo

6. Isa w'a wu soo **yaha** puga, na gari sige ni.
W'a wu moto **yaha** puga, na gari sige ni.

7. Solomani w'a kari puuloo feni. A wu she puuloo kaguro gbo, na pu lo na ma puga. Na ba Masa ta koo na wu be ya yiri sige ni. A wu jo na Solomani wu poloo wa kan wu mu. A wu jo na wee da wu kan we. A m'a poloo nigin sho wu na, na ba waa yaara ni, na wee poloo wu yaha koo li ni. A ponɔ la di foro wà, na ba wu lo toro. A m'a ba no na fo, poloo wu ni, na ganha na ya na ma puga.

8.

gulo goo

paa

7 7

8 8